

ISPB14

KWANGWOON UNIVERSITY, KOREA
JUNE 23(Sunday)-26(Wednesday),2024

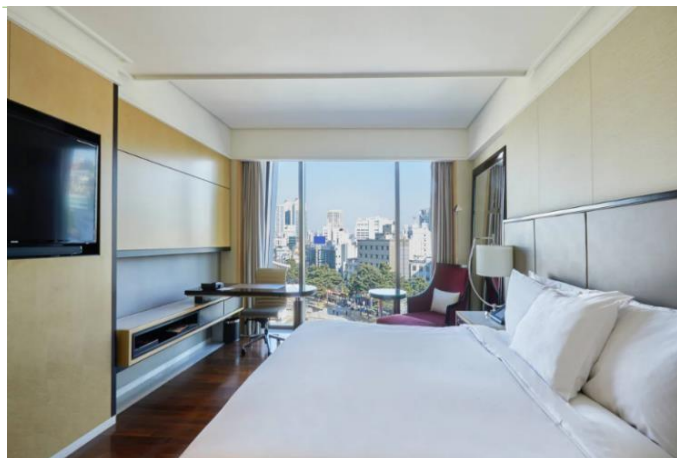
14TH INTERNATIONAL SYMPOSIUM ON PLASMA BIOSCIENCES

**We recommend 5 accommoations about 30 minutes away from ISPB14.
If you want to accommodation, book it through the hotel.**

Accommodation

- | | |
|---|--------------|
| 1. JW Marriott Dongdaemun Square Seoul – 5Star | 1p |
| 2. Novotel Amvassador Seoul Dongdaemun – 5Star | 2-3p |
| 3. Skypark Kingstown Dongdaemun – 4Star | 4-5p |
| 4. Ramada Seoul Dongdaemun – 3Star | 6-8p |
| 5. Arirang Hill Hotel Dongdaemun– 3Star | 9-10p |

1. JW Marriott Dongdaemun Square Seoul – 5Star



Tel	+82-2-2276-3000
Address	279 Cheonggyecheon-ro, Jongno-gu, Seoul, 03198 South Korea
Website	https://www.marriott.com/en-us/hotels/seldp-jw-marriott-dongdaemun-square-seoul/overview
Room	Deluxe Guest Room (1 King Bed) approx. KRW 338,740

[How to get to KwangWoon University by SUBWAY]

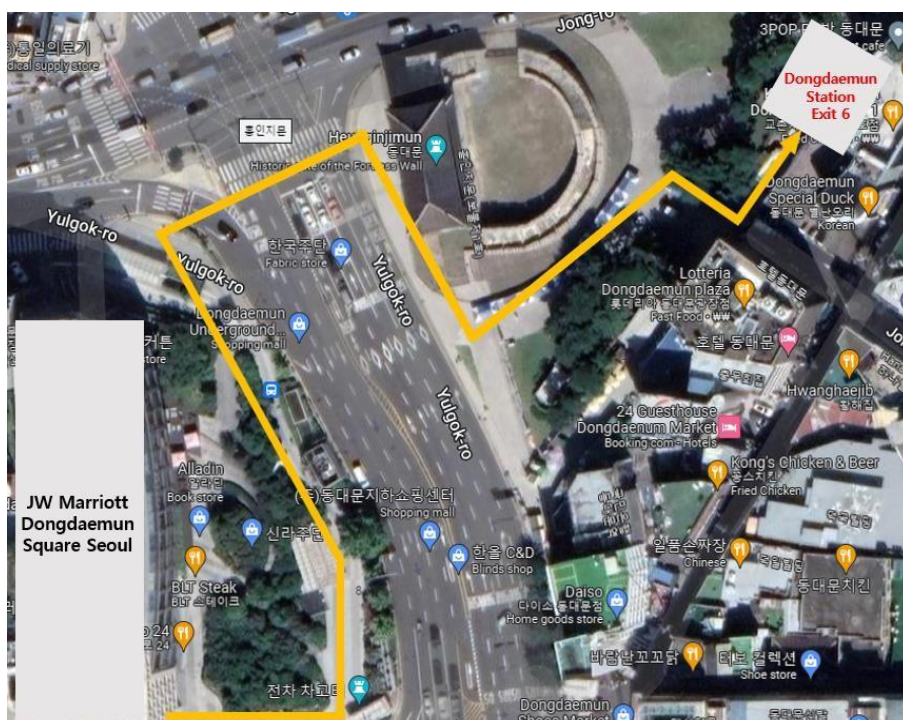
1. Hotel → Dongdaemun Station **Line 1 Exit 6** / about 6minutes on foot
2. Dongdaemun Station **Line 1 Exit 6** (To Soyosan)
→ Get off at KwangWoon University Station / about 20minutes
3. KwangWoon University Station **Exit 1** → KwangWoon University / 12 minute on foot

[Map1]

[How to get there by TAXI]

- **Fee**: about 13,800 won
- **Time**: about 40 minutes

[Map1] JW Marriott Dongdaemun Square Seoul → Dongdaemun Station Line 1 Exit 6



2. Novotel Ambassador Seoul Dongdaemun – 5Star



Tel	+82-02-3425-8000
Address	238 Eulji-ro, Jung-gu, Seoul, South Korea
Website	https://www.ambatel.com/novotel/dongdaemun/ko/main.do
Room	Standard Room (1 Queen size Bed) approx. KRW 171,000

[How to get to KwangWoon University]

(1) Subway

1. Hotel → Jongno 5-ga Station **Line 1 Exit 6** / 12minute on foot [Map2]
2. Jongno 5-ga Station **Line 1 Exit 6** (To Soyosan)
→ Get off at KwangWoon University Station / about 22minutes
3. KwangWoon University Station **Line 1 Exit 6** → KwangWoon University / 12 minute on foot

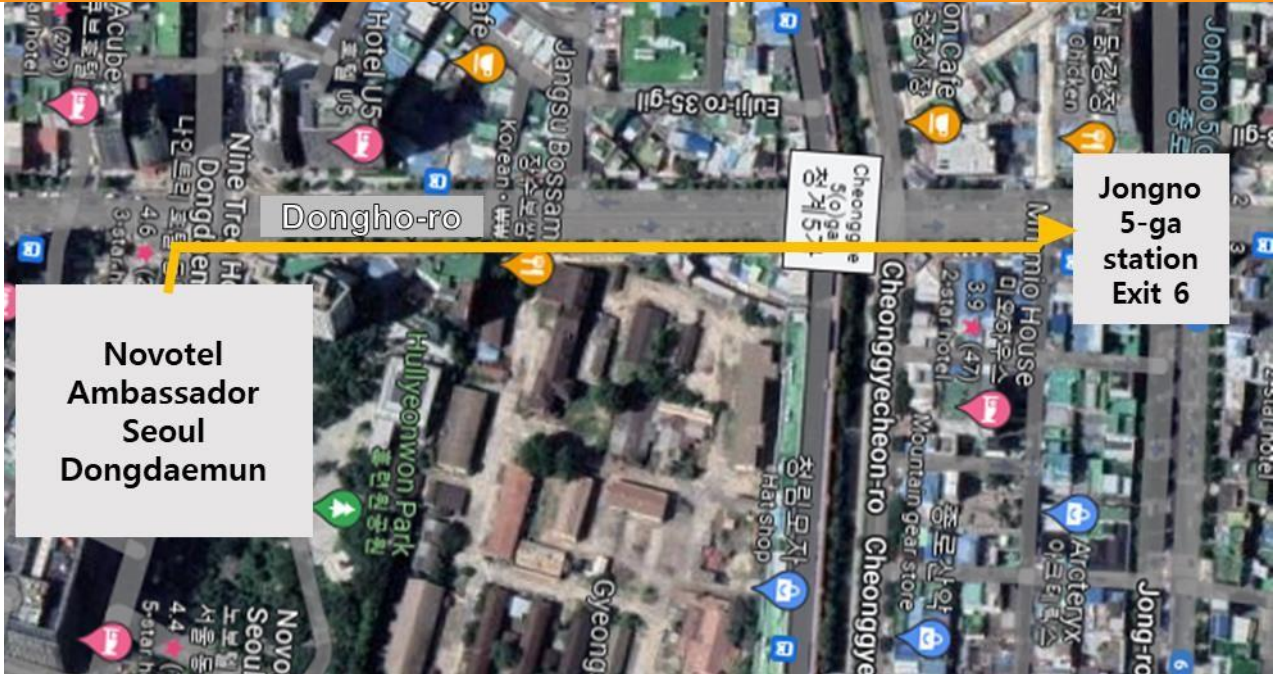
(2) Bus

1. Euljiro 6-ga National Medical Center Bus Stop Take **No. 261** [Map3]
(Next Bus Stop: Dongdaemun History and Culture Park)
2. Get off at KwangWoon University bus stop
3. KwangWoon University / 12 minute on foot

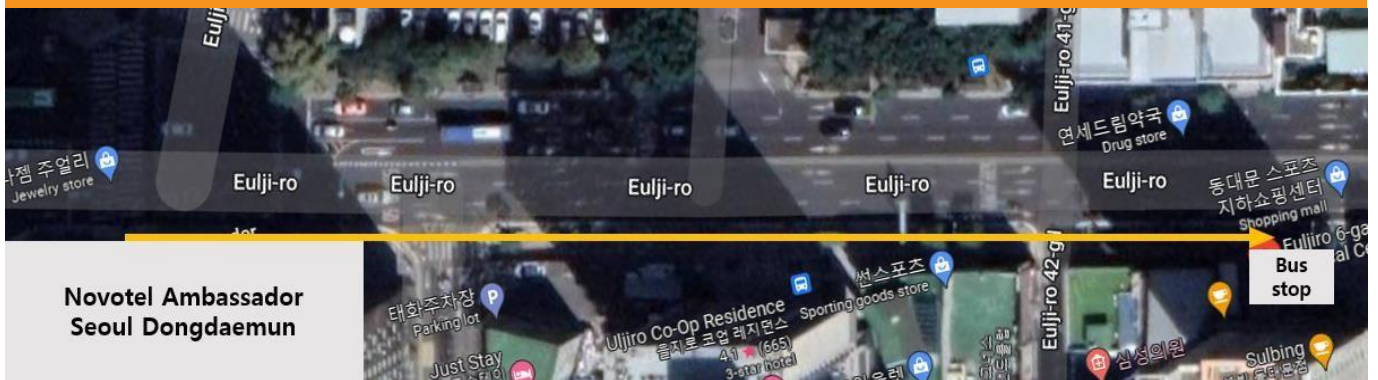
[How to get there by TAXI]

- **Fee**: about 14,500 won
- **Time**: about 45 minutes

[Map2] Novotel Ambassador Seoul Dongdaemun → Jongno 5-ga Station Line 1 Exit 6



[Map3] Novotel Ambassador Seoul Dongdaemun → Euljiro 6-ga National Medical Center Bus Stop



3. Skypark Kingstown Dongdaemun – 4Star



Tel	+82-02-6900-9300
Address	Hotel Skypark Kingstown Dongdaemun, 20 Jangchungdan-ro 13-gil, Jung-gu, Seoul
Website	https://www.skyparkhotel.com/html/main.asp
Room	Standard Double (1 Double Bed) approx. KRW 102,000

[How to get to KwangWoon University by SUBWAY]

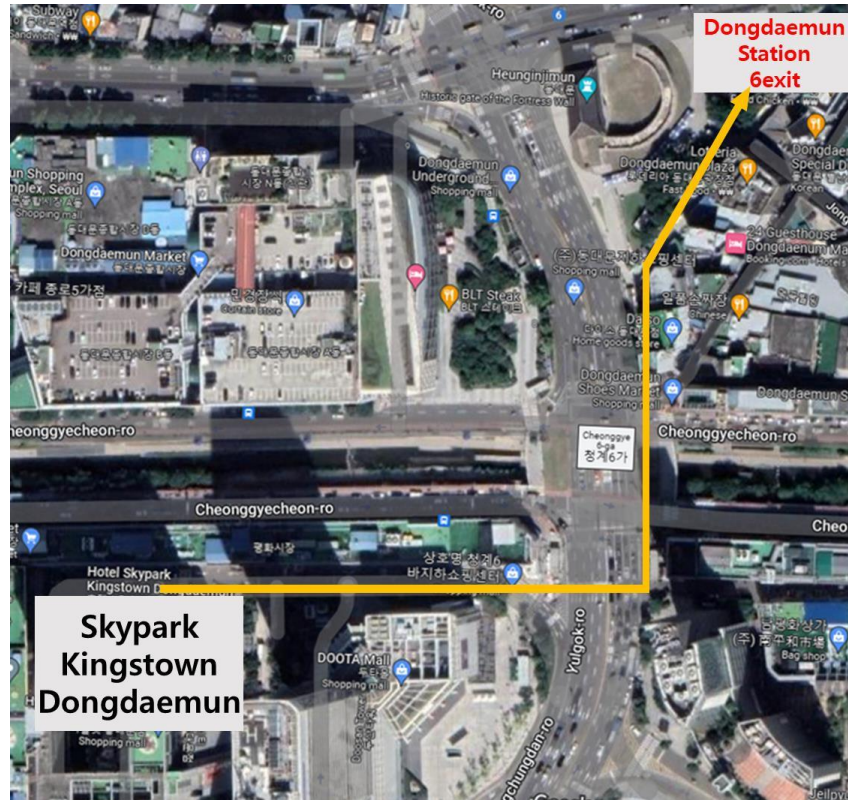
1. Hotel → Dongdaemun Station **Line 1 Exit 6** / 10minute on foot
2. Dongdaemun Station **Line 1 Exit 6** (To Soyosan)
→ Get off at KwangWoon University Station / about 20minutes
3. KwangWoon University Station **Exit 1** → KwangWoon University / 12 minute on foot

[Map4]

[How to get there by TAXI]

- **Fee**: about 16,200 won
- **Time**: about 50 minutes

[Map4] Skypark Kingstown Dongdaemun → Dongdaemun Station Line 1 Exit 6



4. Ramada Seoul Dongdaemun – 3Star



Tel	+82-02-2276-3500
Address	Ramada Seoul Dongdaemun 04561, Dongho-ro 354, Jung-Gu, Seoul
Website	https://be4.wingsbooking.com/RDH1
Room	Standard King (1 Double Bed) approx. KRW 110,500 Standard Twin (2 Single Bed) approx. KRW 110,500

[How to get to KwangWoon University]

(1) Subway

- Hotel → Jongno 5-ga Station **Line 1 Exit 6** / 12minute on foot [Map5]
- Jongno 5-ga Station **Line 1 Exit 6** (To Soyosan)
→ Get off at KwangWoon University Station / about 22minutes
- KwangWoon University Station Exit 1 → KwangWoon University / 12 minute on foot

(2) Bus

- Euljiro 5-ga, Jungbu Market Bus Stop Take **No. 261** (Next Bus stop: Euljiro 6-ga National Medical Center)
- Get off at KwangWoon University Bus stop [Map6]
- KwangWoon University / 12 minute on foot

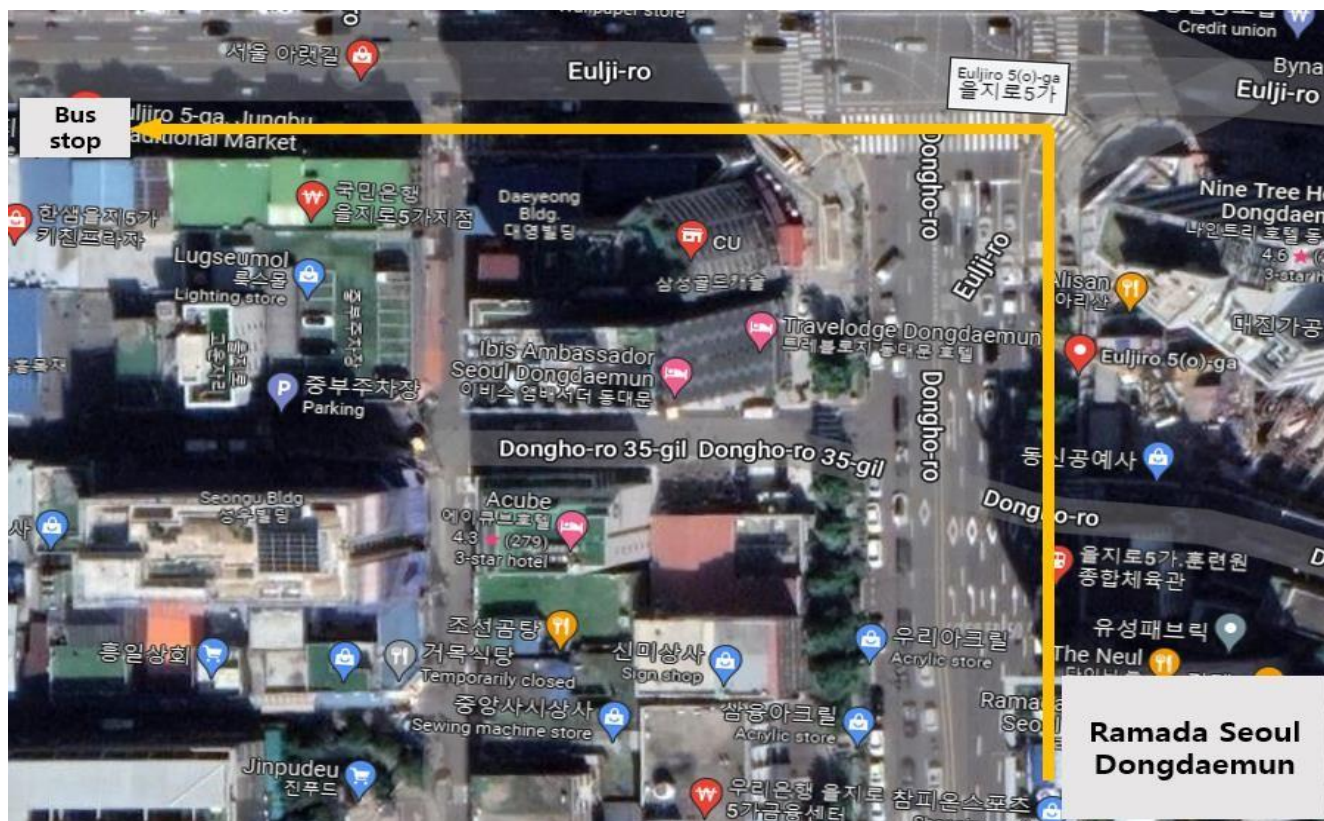
[How to get there by TAXI]

- **Fee**: about 14,000 won
- **Time**: about 42 minutes

[Map5] Ramada Seoul Dongdaemun → Jongno 5-ga Station Line 1 Exit 6



[Map6] Ramada Seoul Dongdaemun → Euljiro 5-ga, Jungbu Market Bus stop



5. Arirang Hill Hotel Dongdaemun– 3Star



Tel	+82-02-925-7000
Address	Arirang-ro 8 (Dongseon-dong 4-ga), Seongbuk-gu, Seoul, Arirang Hill Hotel Dongdaemun
Website	https://book.revato.com/972160?Source=LNK&languagecode=EN
Room	Superior Double Room (1 Double Bed) approx. KRW 134,400

[How to get to KwangWoon University]

(1) Bus

1. Donam Intersection, Sungshin Women's University Entrance Bus Stop Take **No. 172, No.103**
2. Get off at Jangwi Raemian Apartment Bus Stop
3. KwangWoon University / 17 minute on foot

[Map7]

[How to get there by TAXI]

- **Fee**: about 13,000 won
- **Time**: about 32 minutes

[Map7] Arirang Hill Hotel Dongdaemun → Donam Intersection, Sungshin Women's University Entrance
Bus Stop

